



The Wellcome Trust: An International Overview

AVMI meeting 30th Nov 2016

Zoe Seager PhD
Vaccines strategy team

Who we are?

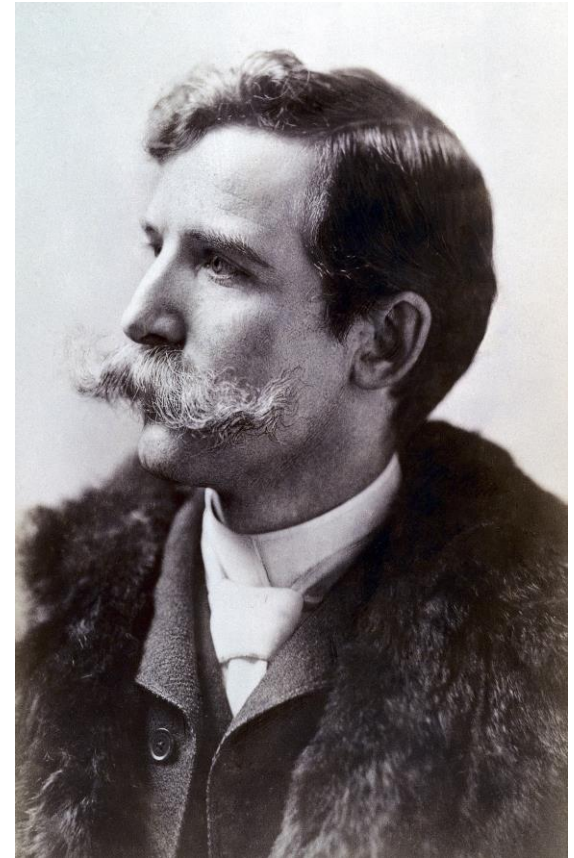
An independent global charitable foundation, dedicated to improving health.

We remain true to the vision and values of our founder, Sir Henry Wellcome, a medical entrepreneur, collector and philanthropist.

Our Philosophy: Good health makes life better. We want to improve health for everyone by helping great ideas to thrive.

Since 1936, our support has helped to save and improve millions of lives around the world through science, research, evidence and engagement with society.

Science, Innovations, Culture & Society



Ongoing Funding Streams

Response Mode Funding

Individual Awards in hypothesis-driven research

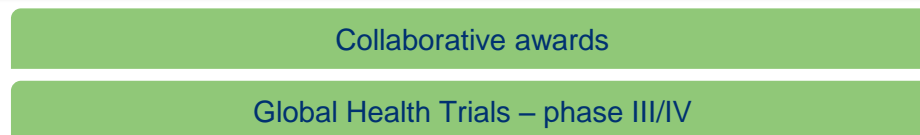
Career/salary support



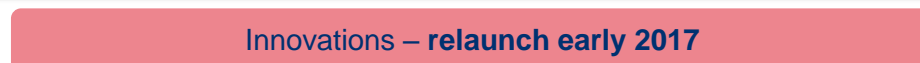
Career support without salary



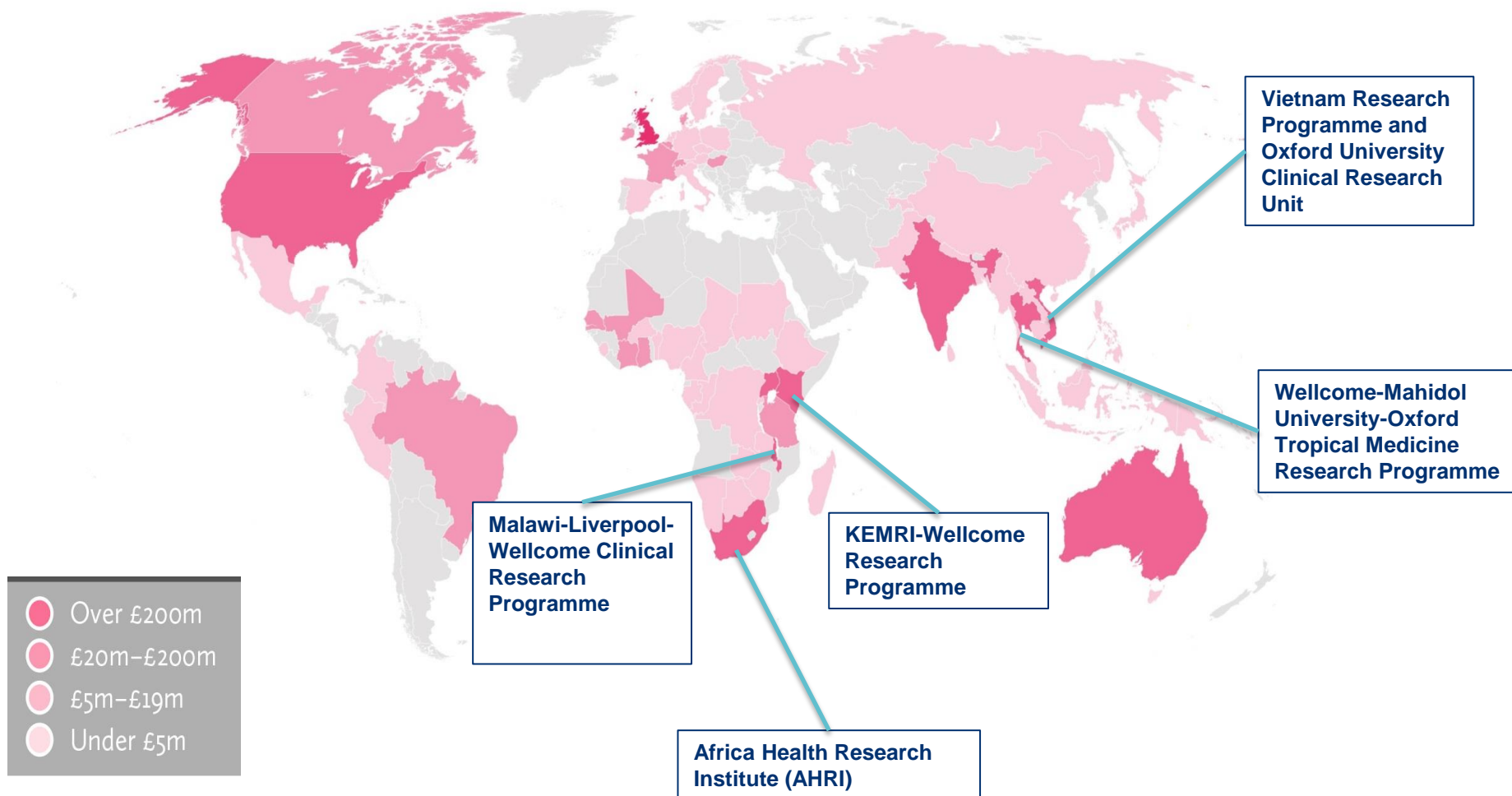
Team awards



Product development



Where we work



Africa – other strategic activities

The Alliance for Accelerating Excellence in Science in Africa (AESA)

- Set up in 2015 by the African Academy of Sciences (AAS) and the New Partnership for Africa's Development Agency (NEPAD) with support from Wellcome, the Bill and Melinda Gates Foundation and the UK Department for International Development (DFID).
- Seeks to develop research leadership and promote scientific excellence and innovation to overcome some of Africa's developmental challenges that include the shortage of researchers to deal with its disease burden

Developing Excellence in Leadership, Training and Science initiative (DELTAS Africa)

- A scheme funded by Wellcome in partnership with the UK Department for International Development and AESA. Eleven DELTAS awards have been made across sub-Saharan Africa to establish cutting-edge research and training programmes across the continent.

The Human Heredity and Health in Africa (H3Africa)

- Initiative aims to improve the health of African populations through the study of the genomics of common diseases. The initiative is co-funded by Wellcome and the National Institutes of Health in the USA

Developing Excellence in Leadership, Training and Science (DELTAS Africa)

MALI

- Developing Excellence in Leadership and Genetic Training for Malaria Elimination in Sub-Saharan Africa (DELGEME)

SENEGAL

- Malaria Research Capacity Development in West and Central Africa

COTE D'IVOIRE

- Afrique One- African Science Partnership for Intervention Research Excellence (Afrique One-ASPIRE)

GHANA

- WACCBIP-Wellcome Trust DELTAS Programme

SOUTH AFRICA

- Sub-Saharan African Network for TB/HIV research Excellence (SANTHE)
- Sub-Saharan Africa Advanced Training Programme for Leadership and Excellence in Biostatistics

UGANDA

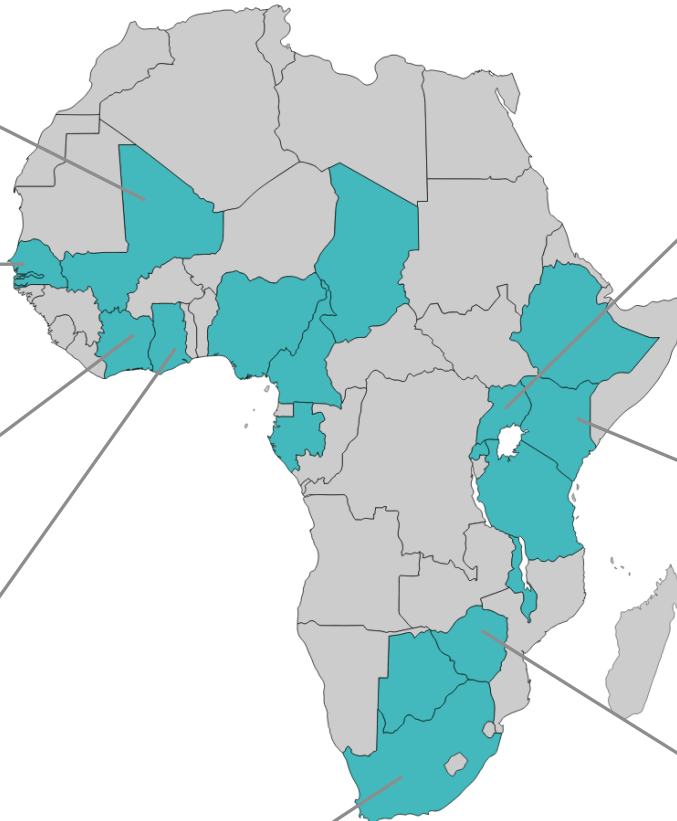
- Makerere University UVRI Centre of Excellence for Infection & Immunity Research and Training (MUII-plus)
- THRIVE to Research Excellence (THRIVE-2)

KENYA

- Initiative to Develop African Research Leaders (IDeAL)
- Consortium for Advanced Research Training in Africa+ (CARTA+)

ZIMBABWE

- AMARI: African Mental Health Research Initiative



What's new?

Seizing Opportunities

To be more focused and proactive in specific areas.

We want to connect experts from different disciplines, build partnerships, and lead advocacy, policy development, communications and public engagement. We will do this by providing focused support that creates a step change over five to ten years.

Research Ecosystems in Africa and Asia: Build partnerships in low- and middle- income countries more scientists in these places can pursue world-class research.

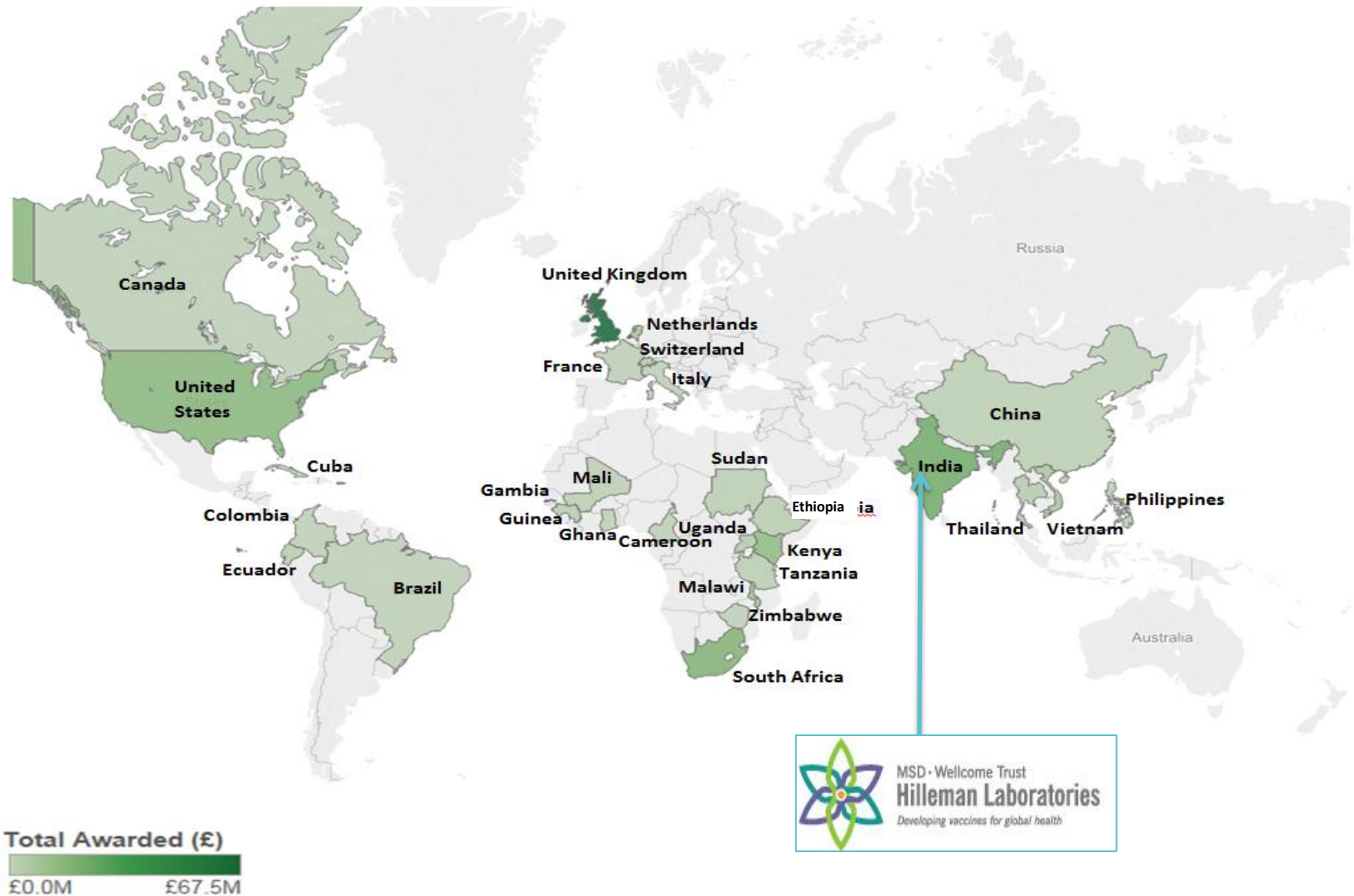
Our Planet, Our Health: Build understanding of how global food systems and urbanisation connect to health, improving the evidence base for public policy.

Drug-resistant infections: Explore how best to use and protect the treatments we have and to encourage the development of new ones.

Vaccines: Explore how best to stimulate research, technology development and policy to address critical unmet needs.

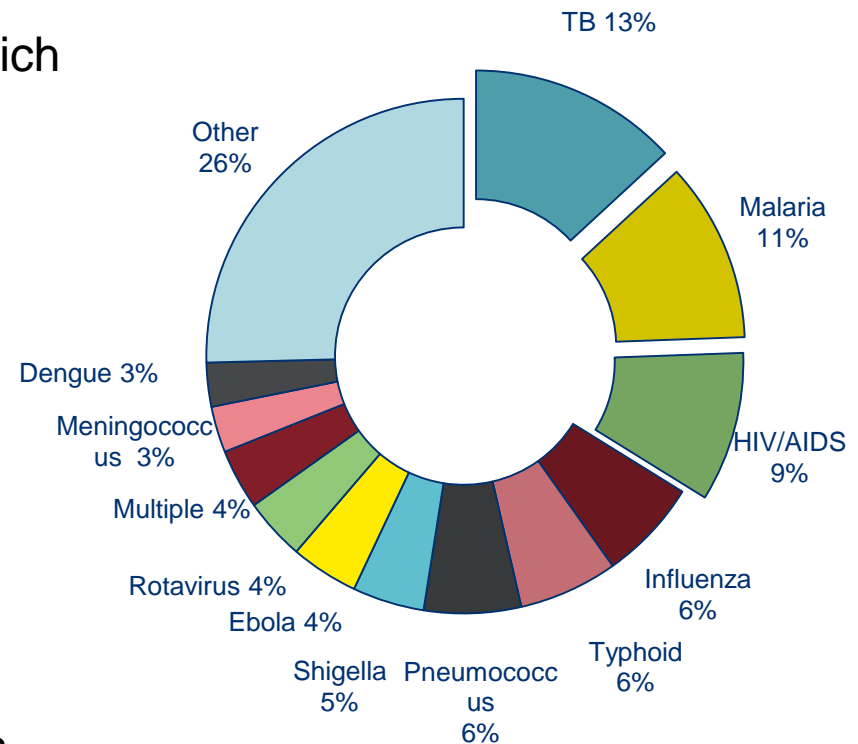
Vaccines at Wellcome

Vaccines: where we've funded 2005-2016

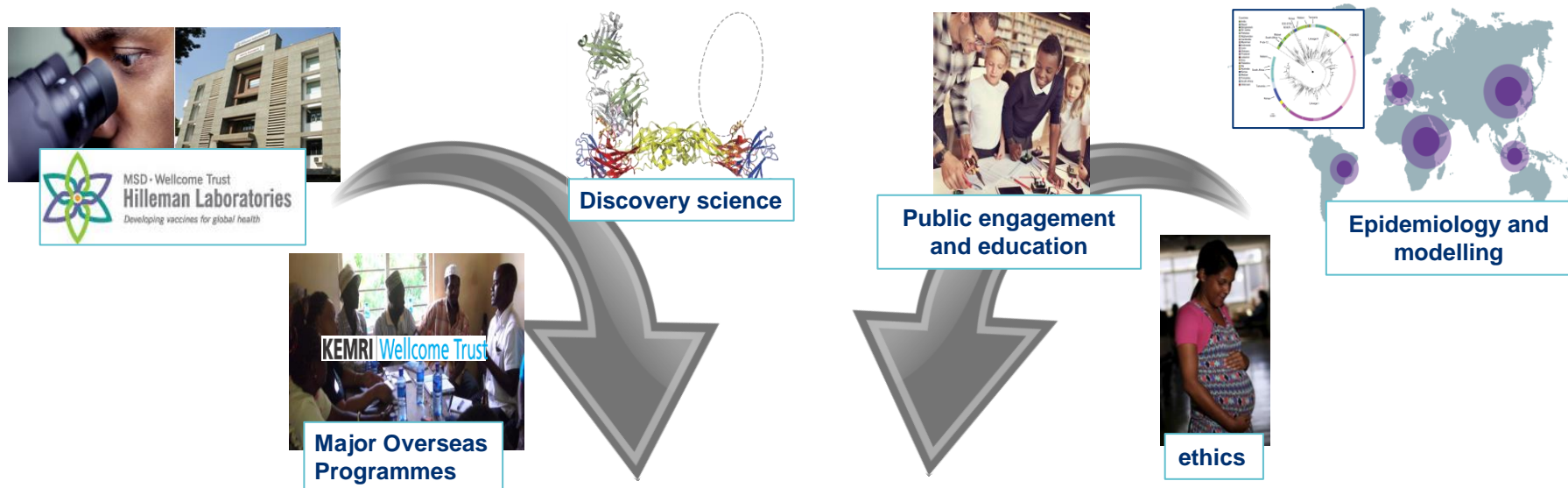


Vaccines: what we've funded 2005-2016

- £200m in vaccine-related grants and activities funded over past 10 years.
- An additional £400m+ in basic research which could support vaccinology – immunology, epidemiology, pathogen biology etc.
- Basic and clinical research focus.
- Primarily in response mode and response mode WILL continue to support vaccine-related activities.
- We are currently identifying new and additional activities that can add value. Working in different ways with new partners.



Areas under exploration



- 1) Epidemic preparedness - CEPI <http://cepi.net>
- 2) Expanded use of controlled human infection models
- 3) Generating evidence and maximising its use in decision making
- 4) Sustainable vaccine development through networks and increased vaccine expertise in key settings



Thank you



z.seager@wellcome.ac.uk