

Advancing vaccine development and manufacture in Africa

24 – 25 September 2018, Freetown, Sierra Leone



# EBOLA VIRUS DISEASE in DRC

Steve AHUKA

UNIVERSITE DE KINSHASA



Faculté de Médecine



# 10 EVD outbreaks between 1976 et 2018 in DRC

- Mortality: 25 à 90%
- **DRC : 10 outbreaks in 9 of 26 provinces --**

Mongala (**Yambuku 1976**), Sud-Ubangi (**Tandala**

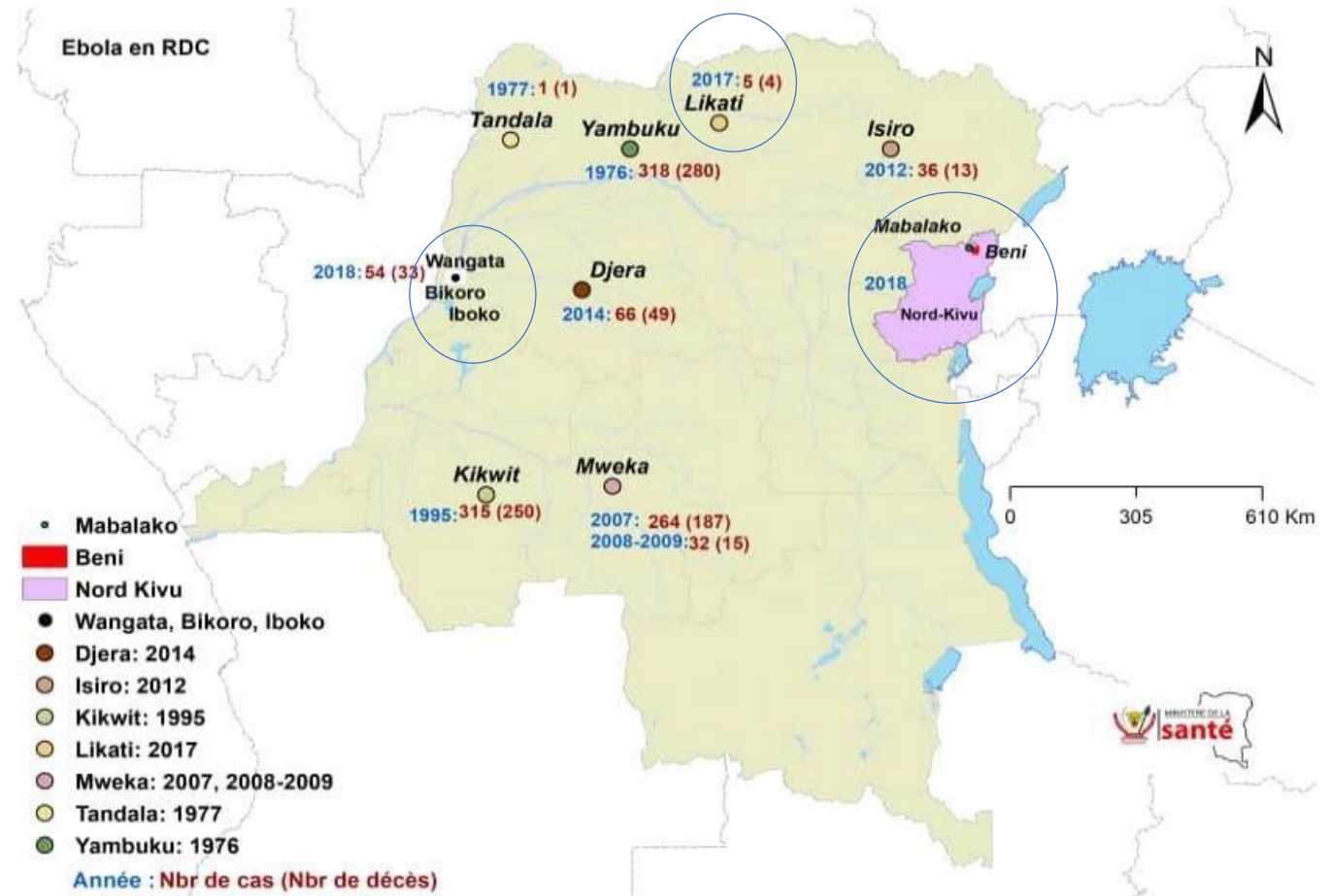
**1977**), Kwilu (**Kikwit 1995**), Kasai-Occidental

(**Mweka 2007** et **Kaluamba 2008**), Haut-Uélé

(**Isiro, 2012**), Tshuapa (**Boende 2014**), Bas-Uélé

(**Likati 2017**), Equateur (**Bikoro 2018**) et Nord Kivu

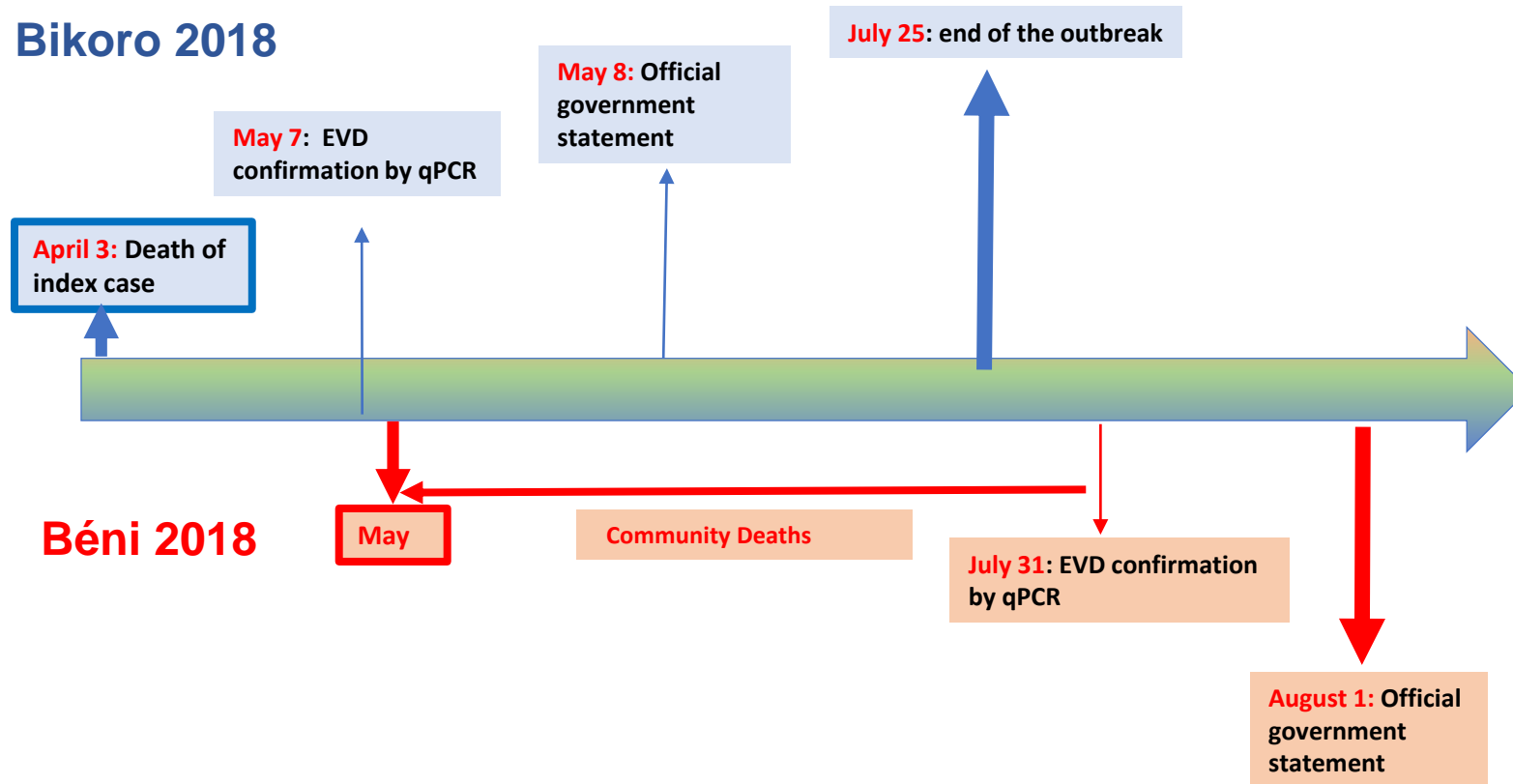
(**Beni 2018**).



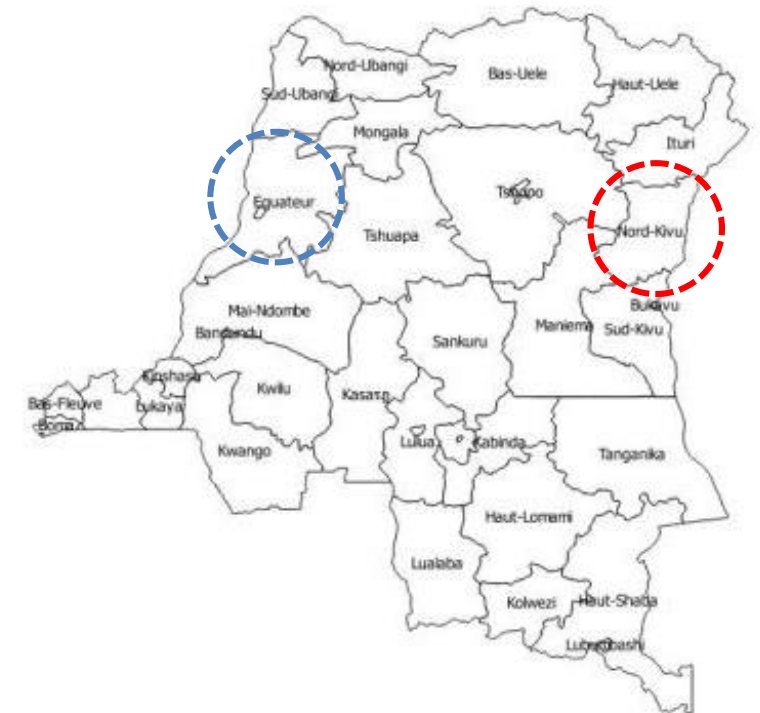
# Two EVD outbreaks in 2018

## Simultaneous Outbreaks

### Bikoro 2018

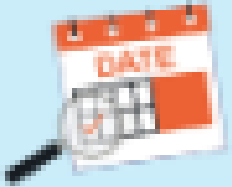


### Béni 2018





# Current situation in the field: 22 September 2018



**118** confirmed cases (554 suspected cases)



**31** probable cases

**Global Mortality: 66%**



**40** Patients recovered



**5306** contacts

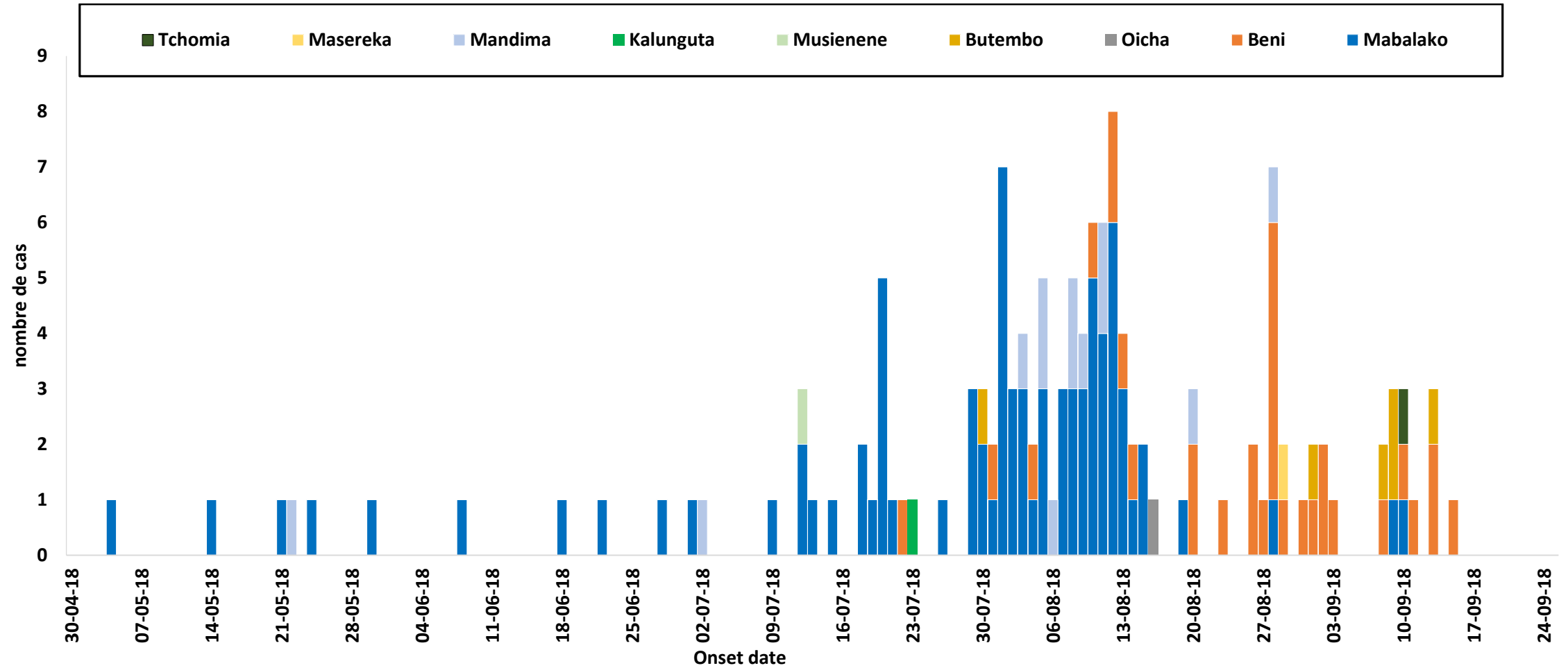


**11044** Vaccinated (contacts , contacts of contacts dans FLHW)

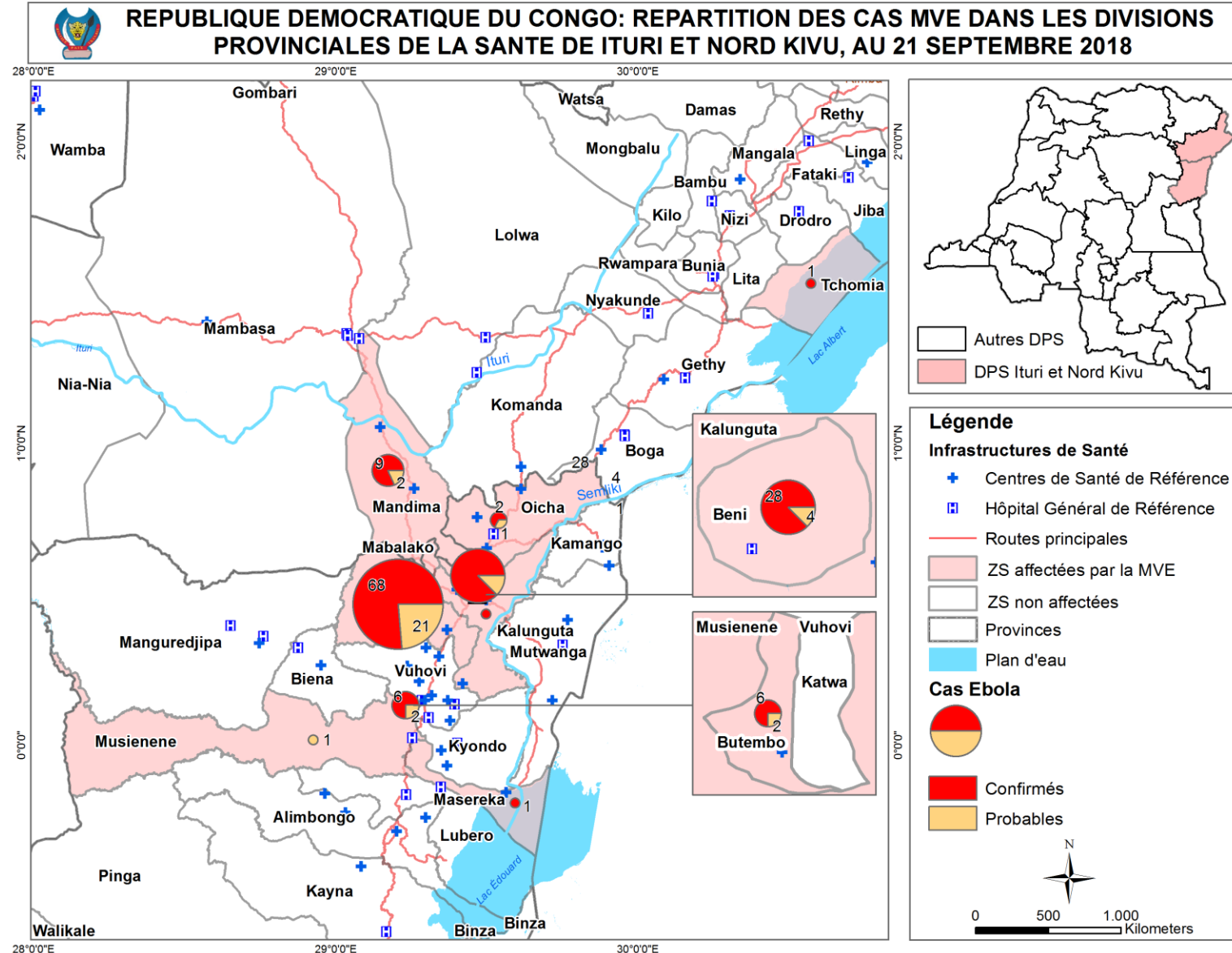


**19** Health staff infected ( **3 deaths**)

# EVD cases per site



# Current situation in the field: 21 September 2018





# EVD Response strategy: National leadership

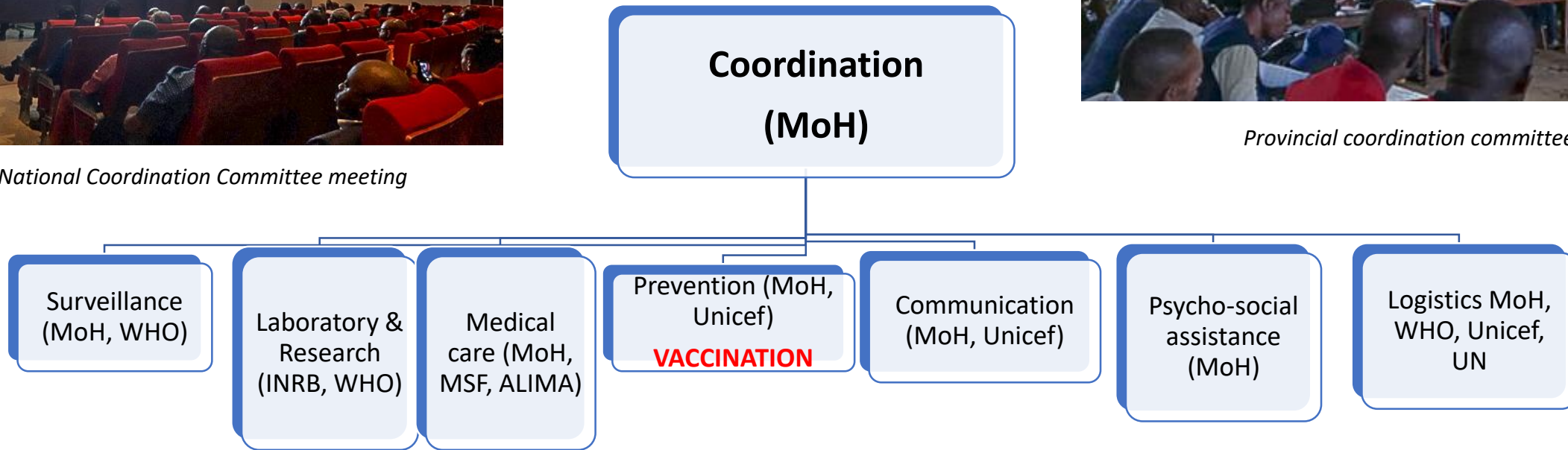
Establishment of a national and field multidisciplinary coordination



*National Coordination Committee meeting*



*Provincial coordination committee meeting*



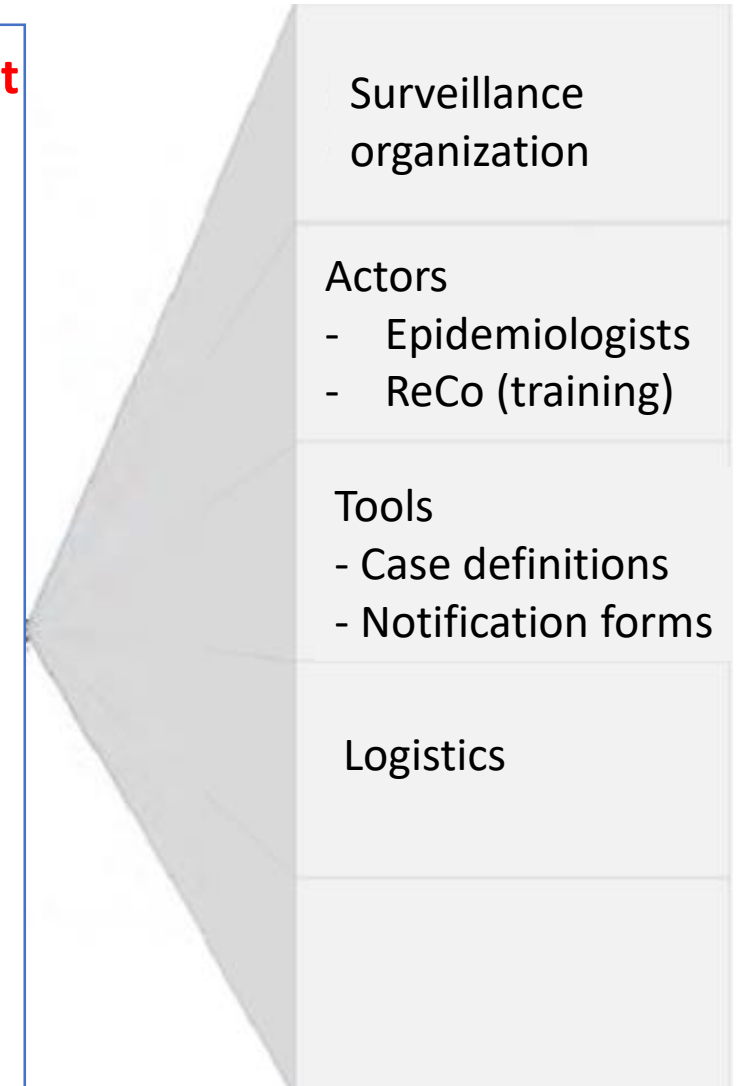


# EVD Response strategy **Surveillance**

## Early detection of suspected cases



## Data management



# EVD Response strategy: surveillance

*Un entretien psychologique avec une famille qui a caché un malade  
LOKOLIA/ Boende/ Equateur, RDC, 2014*



community based  
surveillance



*Surveillance activities at the airport, Bikoro outbreak, 2018*



*L'équipe de la prise en charge sort un cas suspect de la maison.*

*LOKOLIA/ Boende/ Equateur, RDC, 2014*



*Equipe mixte Prises en charge médicale et psychosociale- Transfert d'un cas suspect vers le CTE  
LOKOLIA/ Boende/ Equateur, RDC, 2014*

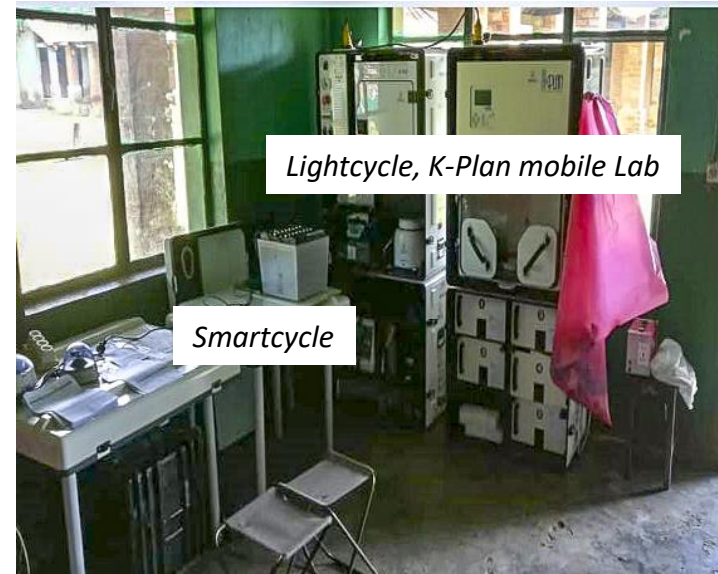


# EVD Response strategy: Laboratory and Research

- Diagnostic activities
  - ✓ Rapid tests (OraQuik and **QuickNavi**)
  - ✓ RT-PCR using
    - Smartcycle,
    - Lightcycle
    - **GenExpert**
  - ✓ ELISA (serial test of IgG)
- Follow-up of patients in CTE
  - ✓ RT-PCR
  - ✓ Hematological and biochemical tests (Piccolo and I-start)



GenExpert



Smartcycle

Lightcycle, K-Plan mobile Lab



# EVD Response strategy: Medical care

## ○ Medical care activities

- ✓ Isolation of patients
- ✓ Supportive treatment
- ✓ Free medical consultation
- ✓ Trials using 5 molecules in MEURI protocole
- ✓ 37 patients have been treated with drugs



*Isolation cube for patients in CTE, Béni outbreak, 2018*

## EVD Response strategy: Medical care

Drugs	Site	Number of treated Patient
mAb 114	MANGINA	14
	BENI	3
	BUTEMBO	4
REMDESIVIR	MANGINA	5
	BENI	4
ZMAPP	BENI	7
TOTAL		37

*Experimental drugs in MEURI protocole*



# EVD Response strategy: Prevention

- Break the chain of transmission in the community and hospitals

- ✓ Training on hospital hygiene
- ✓ Installation of handwashing points
- ✓ **Vaccination**
- ✓ Humanized and secure burial

- WASH activities

- ✓ Drinking water supply
- ✓ Installation of latrines





## EVD Response strategy: Communication and Social mobilization and engagement



Sensibilisation sur la MVE

**Objective: to obtain community engagement for a sustainable change of behavior  
(education sessions and dialog)**



On the radio



In the community



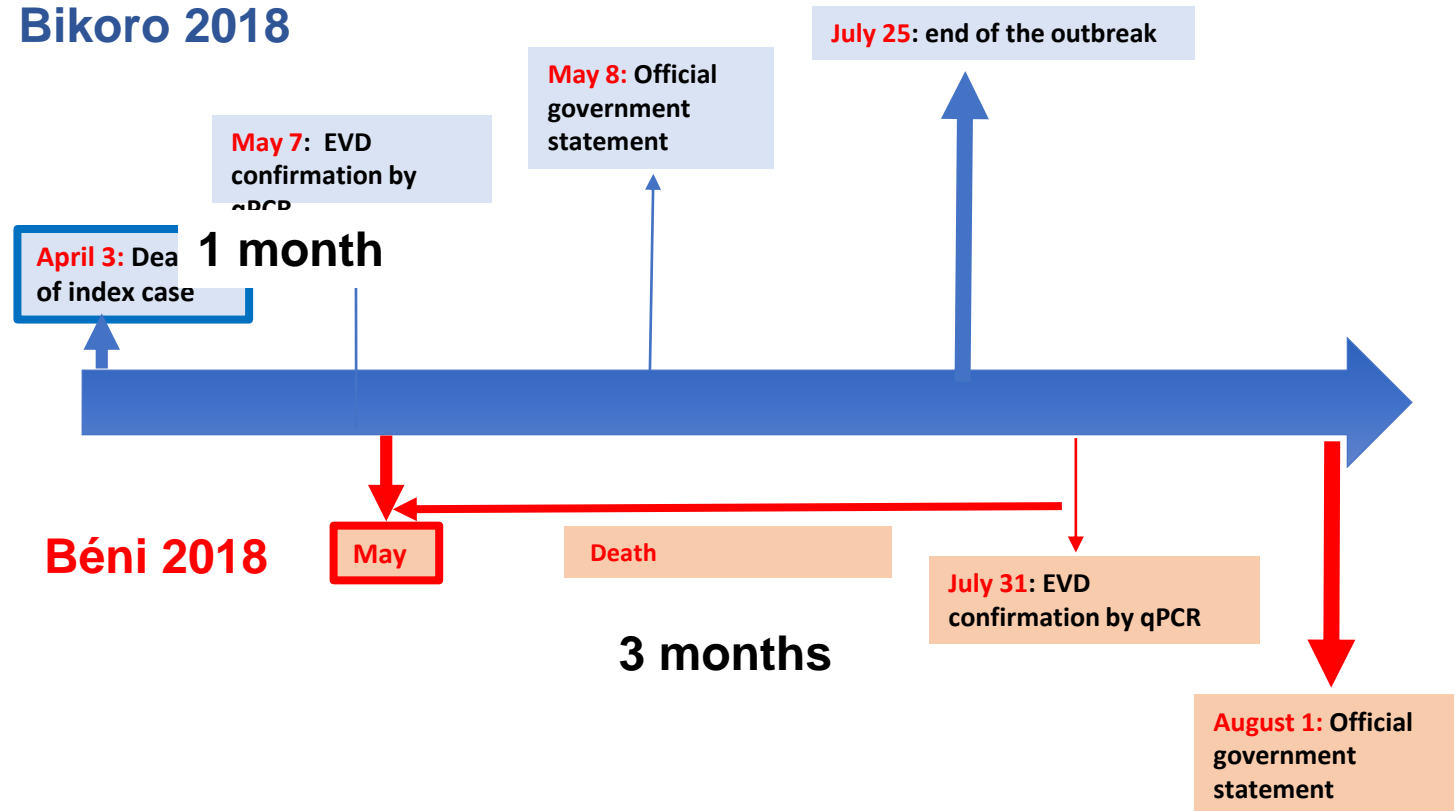
In the church



# Key Challenges

1. Early detection
2. Logistics
3. Community engagement
4. **Security**

## Bikoro 2018



# Message to AVMI community



## Curent outbreaks in DRC

- Ebola
- YF cases
- Measles
- Polio: VDPV
- Cholera
- ....
- All are vaccine preventable diseases

**We need vaccine manufacturing capacity to respond to outbreaks**

**THANKS**